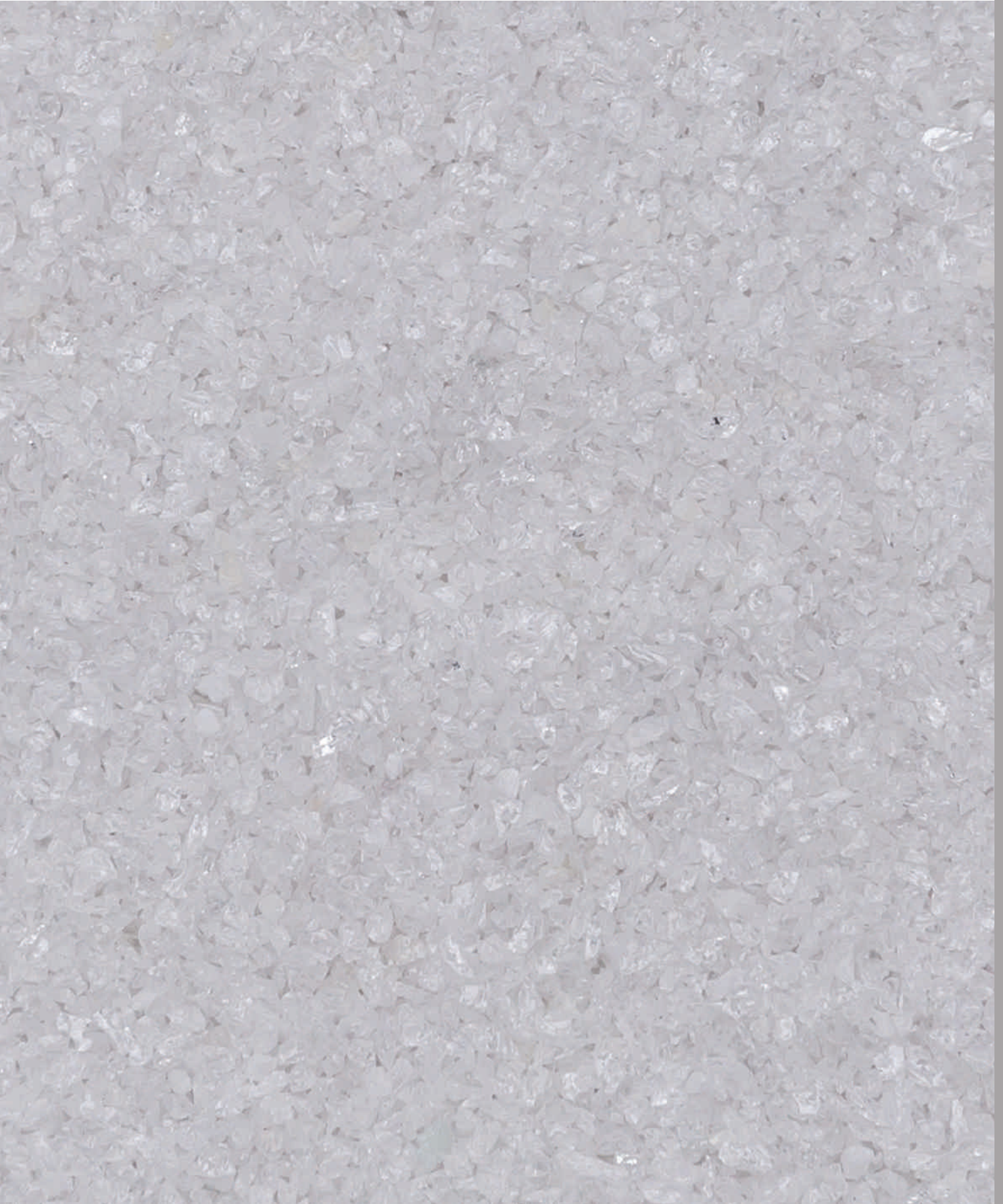
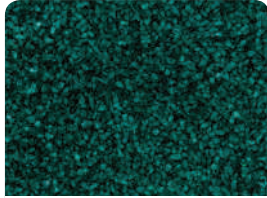


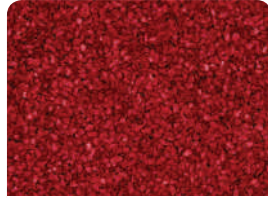
White Aluminium Oxide



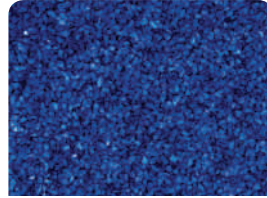
Pigmented White Aluminium Oxide



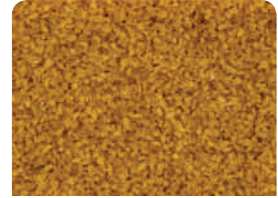
1643 Green



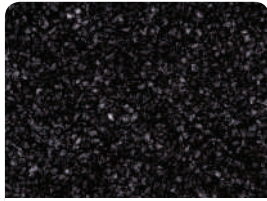
1644 Red



1645 Blue



1647 Yellow



1682 Black

White Aluminium Oxide

White Aluminium Oxide is one of the hardest minerals after diamond. It is a synthetic mineral.

White Aluminium Oxide is available colour coated as follows:
Black 1682 - Blue 1645 - Green 1643 - Red 1644 - Yellow 1647

Chemical Analysis	%	Physical Data	
Al ₂ O ₃	99.5	Particle Shape	Angular
SiO ₂	0.02	Specific Gravity g/cm ³	3.77
Fe ₂ O ₃	0.08	Bulk Density g/cm ³	1.50-1.83
Na ₂ O	0.2-0.4	Hardness Knoop 100	2150
		Hardness (Mohs)	9.0

Commodity Code

2818 101100

Particle Sizes

FEPA	Average (mm)	FEPA	Average (mm)
220	0.05	46	0.36
180	0.06	36	0.50
150	0.08	30	0.60
120	0.10	24	0.70
100	0.13	20	1.0
90	0.15	16	1.2
80	0.18	14	1.4
70	0.21	12	1.7
60	0.26	10	2.0
54	0.30	8	2.4

not all grades may be available from stock

Packing

25 kilo bags on pallets of 1000 kilos and bulk bags

Issue 3 May 2018

All information is given in good faith but is indicative only and does not constitute a specification.

Boud Minerals Limited

West Bank, Sutton Bridge
Lincolnshire PE12 9UR, UK
Tel: +44 (0)1406 351988
Fax: +44 (0)1406 350897
Email: sales@boud.com
Web: www.boud.com

Boud Minerals AB

Häkantorpsvägen 109
SE-26391 Höganäs, Sweden
Tel: +46 42 333741
Fax: +46 42 333829
Email: sweden@boud.com
Web: www.boud.com